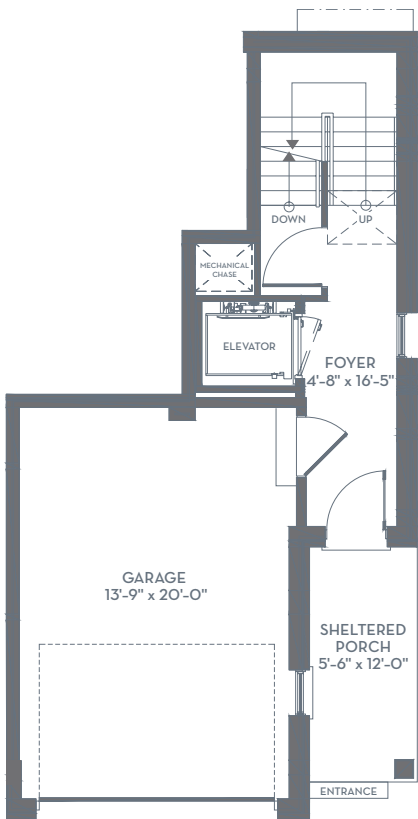
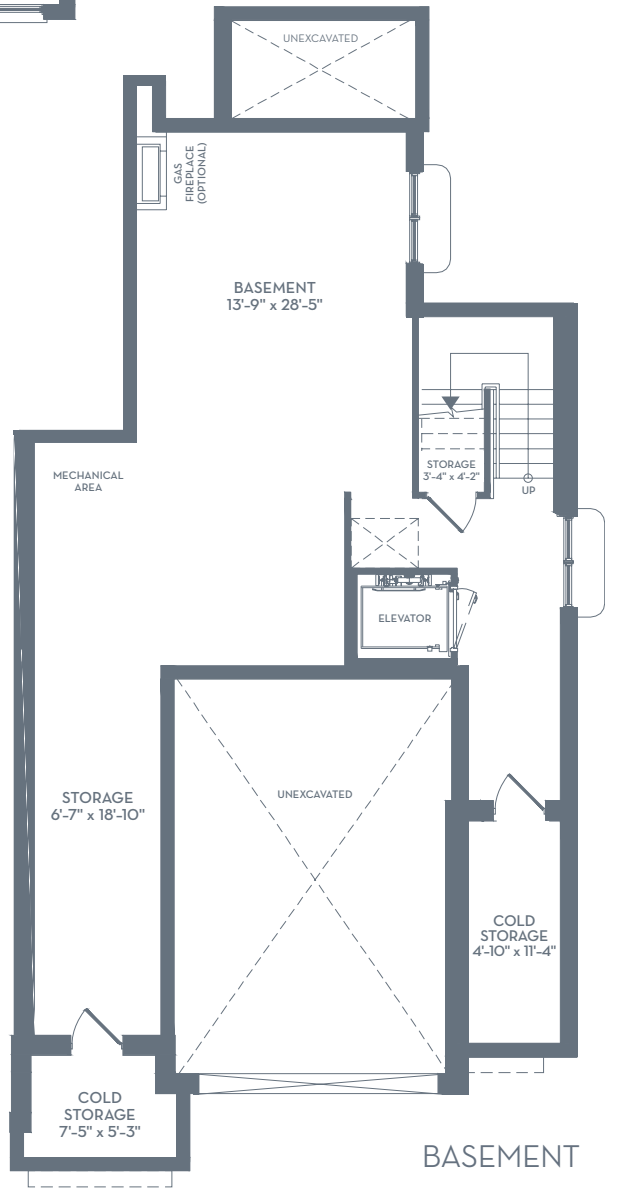


SECOND FLOOR



MAIN FLOOR



BASEMENT



St
ANDREWS
GLEN NIAGARA ON THE LAKE

Sotheby's | Canada
INTERNATIONAL REALTY

The
BALFOUR
1623 SF

ALL DIMENSIONS ARE APPROXIMATE AND SUBJECT TO NORMAL CONSTRUCTION VARIANCES. DIMENSIONS MAY EXCEED THE USABLE FLOOR AREA. SIZES AND SPECIFICATIONS SUBJECT TO CHANGE WITHOUT NOTICE. E.&O.E. ST. ANDREWS GLEN NOTL LTD.® - 11 APRIL 2014